

### Specifications

Model	SX-180	
<b>Measurements</b>	<b>Metric</b>	<b>US</b>
Working height maximum*	56.86 m	186 ft
Platform height maximum	54.86 m	180 ft
Horizontal reach maximum	24.38 m	80 ft
Below ground reach	0.61 m	2 ft
<b>A</b> Platform length	0.91 m	3 ft
<b>B</b> Platform width	2.44 m	8 ft
<b>C</b> Height - stowed	3.05 m	10 ft
<b>D</b> Length - stowed	14.33 m	47 ft
Length - transport (jib tucked under)	12.98 m	42 ft 7 in
<b>E</b> Width - axles retracted	2.49 m	8 ft 2 in
Width - axles extended	5.03 m	16 ft 6 in
<b>F</b> Wheelbase - axles retracted	5.03 m	16 ft 6 in
Wheelbase - axles extended	4.72 m	15 ft 6 in
<b>G</b> Ground clearance - center	0.38 m	1 ft 3 in

### Productivity

Lift capacity	340 kg	750 lbs
Platform rotation	160°	160°
Vertical jib rotation	135°	135°
Horizontal jib rotation	60°	60°
Turntable rotation	360° continuous	
Turntable tailswing - axle retracted	1.14 m	3 ft 9 in
Turntable tailswing - axle extended	1.06 m	3 ft 6 in
Drive speed - stowed	4.02 km/h	2.5 mph
Drive speed - out of stowed		
below 38.10 m (125 ft)	0.65 km/h	0.4 mph
above 38.10 m (125 ft)	0.17 km/h	0.1 mph
Gradeability - stowed**	35%	35%
Turning radius - axle retracted: inside	6.28 m	20 ft 7 in
outside	8.56 m	28 ft 1 in
Turning radius - axle extended: inside	3.02 m	9 ft 11 in
outside	7.34 m	24 ft 1 in

Controls	12 V DC proportional	
Tyres	445/65D 22.5 18 ply foam-filled	

### Power

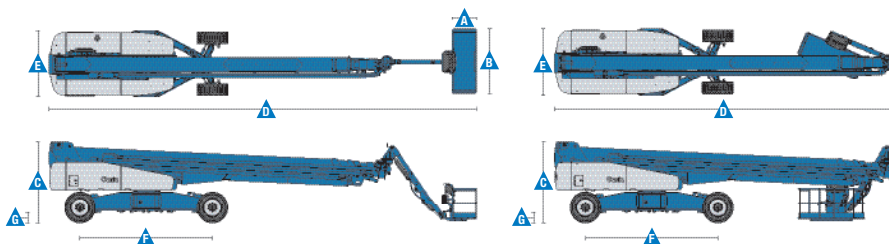
Power source	Deutz Diesel TD 2011 L04i 4-cylinder turbo diesel, 74hp (55kW) Perkins Diesel 1104D-44T 4 cylinder turbo diesel, 74 hp (55 kW)	
Auxiliary power unit	12 V DC	12 V DC
Hydraulic tank capacity	246.1 L	110 gal
Fuel tank capacity	189.3 L	50 gal

### Weight\*\*\*

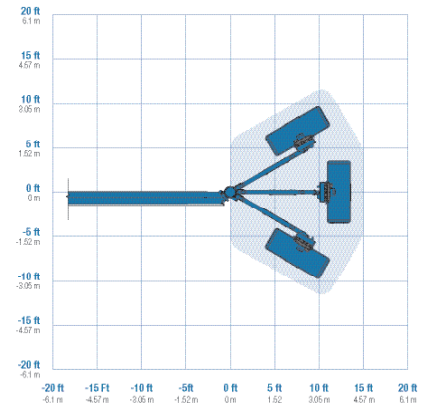
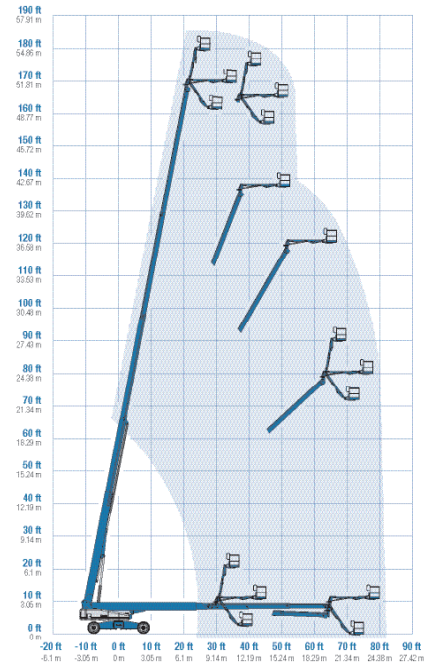
4WD	24,856 kg	54,800 lbs
-----	-----------	------------

### Standards Compliance

EU Directives: 2006/42/EC - Machinery Directive  
Harmonized Standards: EN280:2001+A2:2009;  
2004/108/EC (EMC); 2000/14/EC (Outdoor Noise)



### Range Of Motion SX-180



\* The metric equivalent of working height adds 2 m to platform height. U.S. adds 6 ft to platform height.

\*\* Gradeability applies to driving on slopes. See operator's manual for details regarding slope ratings.

\*\*\* Weight will vary depending on options and/or country standards.

### Features

Standard Features	Easily Configured To Meet Your Needs	Options & Accessories
<p><b>Productivity</b></p> <ul style="list-style-type: none"> <li>• Self-levelling platform</li> <li>• 160° Hydraulic platform rotation</li> <li>• 3.05 m (10 ft) rotating jib</li> <li>• Proportional joystick controls</li> <li>• Hydraulic oil cooler</li> <li>• Thumb rocker steering</li> <li>• Two work lights on platform</li> <li>• Drive enable system</li> <li>• AC power to platform</li> <li>• Horn</li> <li>• Hour meter</li> <li>• Tilt alarm</li> <li>• Descent alarm</li> <li>• Alarm package</li> <li>• 360° continuous turntable rotation</li> <li>• Positive traction drive</li> <li>• Two speed wheel motors</li> <li>• Welder Ready package</li> <li>• Engine status display</li> <li>• Entry toe boards</li> <li>• Certified load sensor</li> </ul> <p><b>Power</b></p> <ul style="list-style-type: none"> <li>• All engines are emissions compliant</li> <li>• 7.5 kW generator               <ul style="list-style-type: none"> <li>- 415V/240V/50Hz (Europe)</li> <li>- 110V/55V/50Hz (UK)</li> </ul> </li> <li>• 12 V DC auxiliary power</li> <li>• Anti-restart engine protection</li> <li>• Auto engine fault shutdown</li> <li>• Intake air heater (Deutz engine)</li> </ul>	<p><b>Platform Options</b></p> <ul style="list-style-type: none"> <li>• Steel 2.44 m (8 ft) (standard)</li> <li>• Steel 2.44 (8 ft) tri-entry</li> </ul> <p><b>Engine Options</b></p> <ul style="list-style-type: none"> <li>• Deutz turbo diesel 55 kW (74 hp)</li> <li>• Perkins turbo diesel 55 kW (74 hp)</li> </ul> <p><b>Drive/Steer</b></p> <ul style="list-style-type: none"> <li>• 4 x 4 (standard)</li> <li>• 4 wheel steer (standard)</li> </ul> <p><b>Axle</b></p> <ul style="list-style-type: none"> <li>• X-Chassis™ extendable axles</li> </ul> <p><b>Tyres</b></p> <ul style="list-style-type: none"> <li>• Rough terrain foam-filled (standard)</li> </ul>	<p><b>Productivity Options</b></p> <ul style="list-style-type: none"> <li>• Platform top auxiliary rail</li> <li>• Hostile environment package <sup>(1)</sup></li> <li>• Dual axis joystick steering</li> <li>• Tool tray</li> <li>• Work lights package (2 on chassis, 2 on platform)</li> <li>• Biodegradable Hydraulic Oil <sup>(1)</sup></li> <li>• Airline to Platform <sup>(1)</sup></li> <li>• Anemometer</li> <li>• Platform &amp; ground control box covers</li> <li>• Track &amp; Trace <sup>(2)</sup> (GPS unit providing machine location &amp; operating information)</li> <li>• Operator Protective Structure</li> </ul> <p><b>Power Options</b></p> <ul style="list-style-type: none"> <li>• AC generator packages (120V/50Hz with dual sockets in platform - 240-415V/50Hz 3 phase with 5 pole 3 phase socket and 240V socket - Both generators are 7,5 kW)</li> <li>• Cold Weather Packages</li> <li>• Diesel scrubber/spark arrestor muffler (catalytic muffler)</li> <li>• Intake air pre-cleaner <sup>(1)</sup></li> </ul>



<sup>(1)</sup> Factory-fit option only  
<sup>(2)</sup> Includes a first 2 years subscription

### United Kingdom

The Maltings, Wharf Road, Grantham NG31 6BH, T: +44 800 988 3739 (toll free), Fax +44 (0)1476 584334, Email AWP-InfoEurope@terex.com  
Visit [www.genielift.co.uk/locations](http://www.genielift.co.uk/locations) to view our global locations list.

### Worldwide Manufacturing And Distribution

Australia · Brazil · Caribbean · Central America · China · France · Germany · Italy · Japan · Korea · Mexico · Russia · Southeast Asia · Spain · Sweden · United Arab Emirates · United Kingdom · United States

Effective Date: March, 2014. Product specifications and prices are subject to change without notice or obligation. The photographs and/or drawings in this document are for illustrative purposes only. Refer to the appropriate Operator's Manual for instructions on the proper use of this equipment. Failure to follow the appropriate Operator's Manual when using our equipment or to otherwise act irresponsibly may result in serious injury or death. The only warranty applicable to our equipment is the standard written warranty applicable to the particular product and sale and we make no other warranty, express or implied. Products and services listed may be trademarks, service marks or trade names of Terex Corporation and/or their subsidiaries in the USA and many other countries. Genie is a registered trademark of Terex South Dakota, Inc. © 2014 Terex Corporation.

