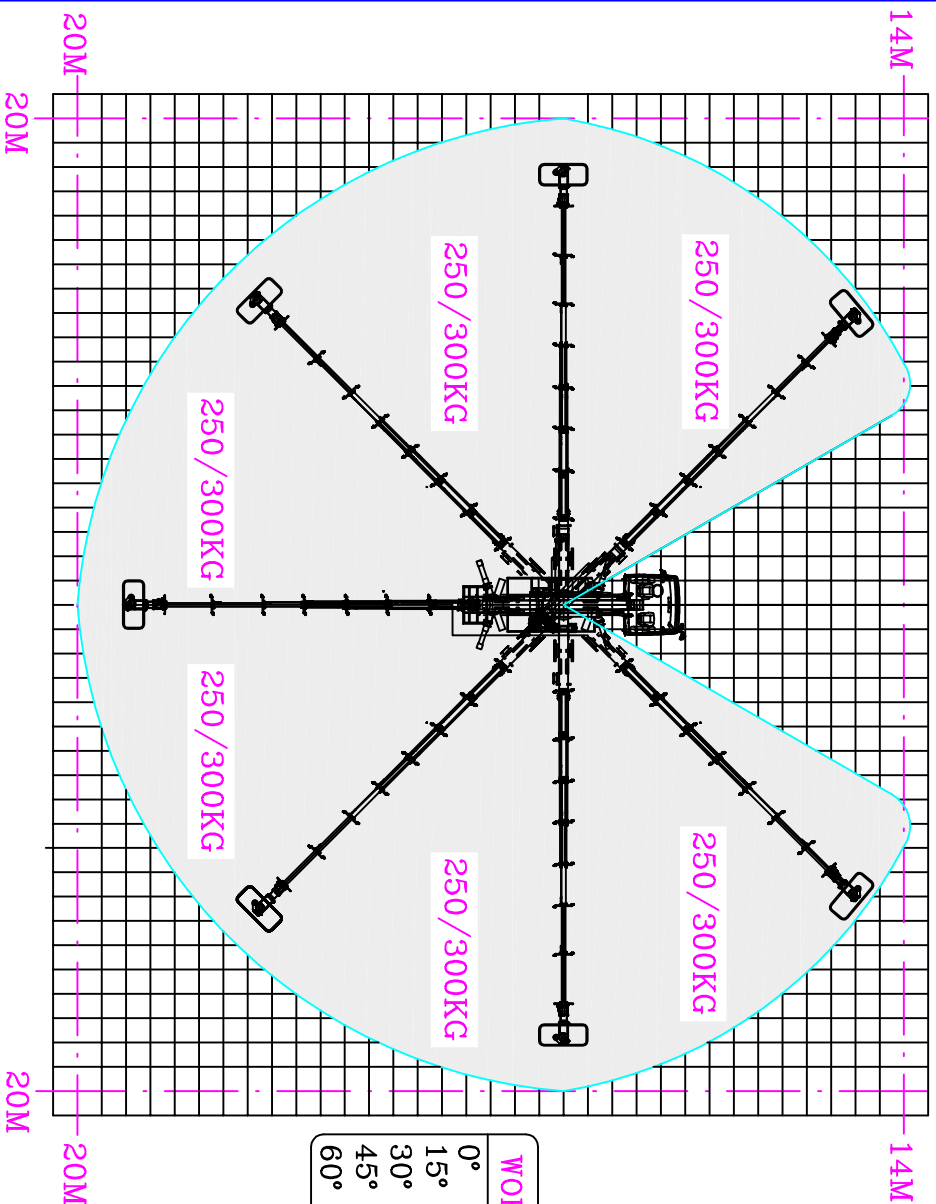
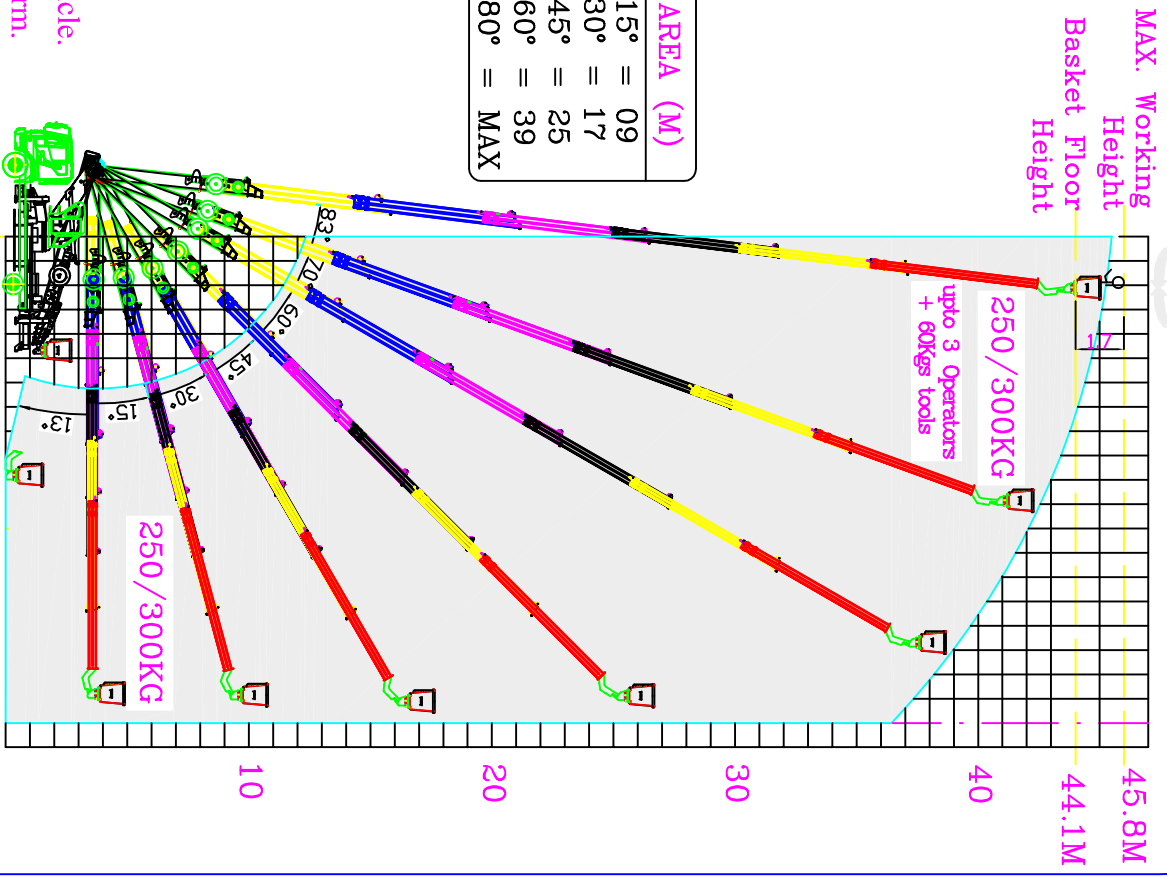


Jinwoo450 Work Area Diagram when mounted on 4x2 Daewoo vehicle



WORK AREA (M)	
0° ~ 15°	= 09
15° ~ 30°	= 17
30° ~ 45°	= 25
45° ~ 60°	= 39
60° ~ 80°	= MAX



Platform Rotation:
360° Continuous in both directions

NOTE:

- * Final delivery Product might vary slightly upon Assembly and Mounting onto vehicle.
- * 250Kg Max. loading into FRP Basket while 300Kg is max. payload in Steel Platform.
- * FRP Basket **not suitable** for working with LIVE High-Tension Voltage Wires. Insulation is for operators within Basket only.
- * **MUST WORK AT LEAST 5M AWAY FROM HIGH TENSION ELECTRICITY WIRES.**
- * All Dim. are in Metres unless specified.

Turret Rotation:

- Std.: 340°(±170° Non-Continuous with Auto Cut-off Sensors)
- Optional: 360° Continuous in both directions