



## MC405 CRM(E) Mini Crane

The MC405 is the most powerful of the MC range mini cranes with an outstanding 3.83 tons of lifting capacity. The optional fly jib increases the already impressive working range even further. This fantastic model also has a unique pick and carry feature of up to 500kg.



### Features at a glance...

- 3.83Ton Max capacity
- 16.8m Max Working Height (MWH)
- 20.7m (MWH) With Optional Fly Jib
- 500kg Pick & Carry Duty
- Energy Saving System
- Sheaves Protected Inside Boom
- Variable (Hi/Lo) Travel Speeds
- Programmable Moment Limiter
- Hydrostatic Transmission
- Centralized Controls
- 4 Fall / 2 Fall Hook Block
- Automatic Hook Stowage System
- Tilt Sensor/Alarm
- Powerful Two Speed Winch
- Hydraulic Disc Brake
- Remote Control
- Outrigger Interlock System
- 2 Year Warranty

### More Images...



Glazing



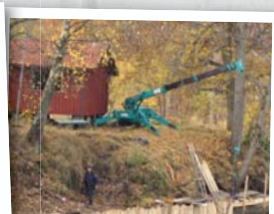
Timber Frame Work



Pick and Carry



Restricted Access



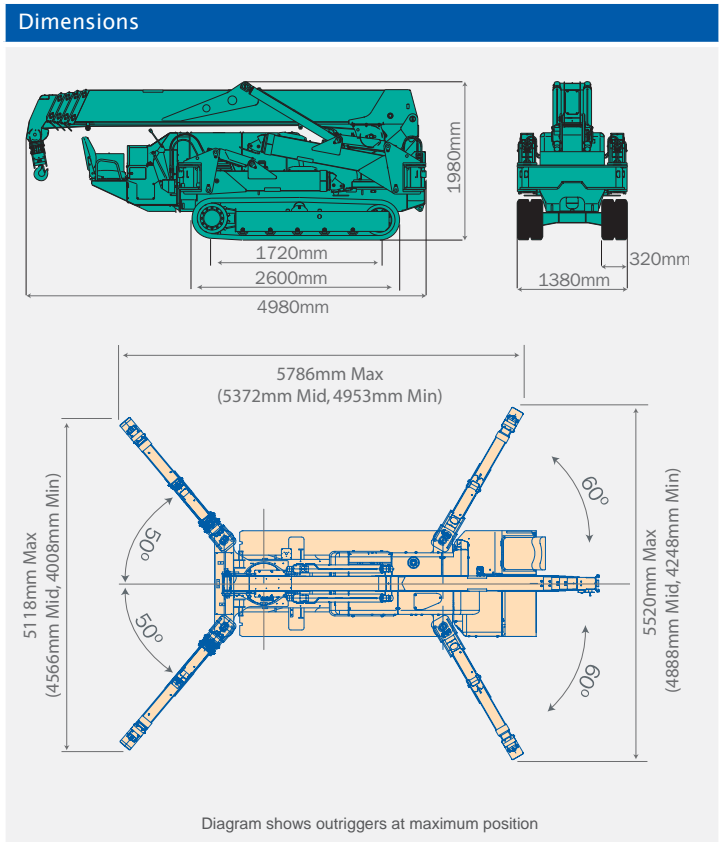
Uneven Ground

... consider the possibilities



Specifications		
Capacity	Maximum	3.83 t x 2.7m
Working Radius	Maximum	16.0m x 210kg
Lifting Height	Maximum	16.8m x 1130kg (20.7m x 520kg with Fly-Jib)
Dimensions	MC405 CRM(E)	4980mm x 1380mm x 1980mm
Weight	MC405 CRM MC405 CRME	5600kg 5750kg
Hook Speed	Maximum	18m / min (4 falls, 4th layer)
Single Line Speed	Maximum	72m / min. (4th layer)
Hoist Rope	Type	IWRC 6 x WS (26) Ø 8mm x 92m
Telescopic System	Boom length Telescoping speed Boom type	4.735m - 16.475m 11.7m / 54.2 sec (41.3sec) Fully automatic 5 section pentagonal telescopic boom
Boom Hoist System	Hoist angle / speed	0° - 80° / 24.5 sec (17 sec)
Slew System	Slew angle / speed	360° continuous / 2.1rpm (2.5 rpm)
Outrigger System	Type Maximum extended dimensions	Extension and set-up by hydraulic cylinders. (Length) 5786mm x (Front) 5118mm x (Rear) 5520mm
Traction System	Drive Travel speed Gradability Ground length x width Ground pressure	Hydraulic motor driven, stepless speed changer 0 - 3.3 km/h 20° 1720mm x 320mm (Track dimensions) 0.50 kgf / cm <sup>2</sup> (0.52 kgf / cm <sup>2</sup> CRME)
Engine	Model Type Rated output Starting method Fuel tank capacity	Yanmar 3TNV88-BPMB 3 cylinder water cooled diesel 21.4 Kw / 2400 rpm Electric Diesel / 60L
Electric Motor (Optional)	Type Size	Fully enclosed fan cooled motor 7.5 Kw 4P 380V
Standard Equipment	Overwind protection, hydraulic safety valves, wire rope latch, level, machine body inclination alarm, EMO switch, travel lock lever, outrigger interlock device, moment limiter, working status lamp, hour-meter, 4-fall / 2-fall hook block, black rubber tracks and cable remote control.	
Optional Equipment	Radio remote control, white rubber tracks, single fall hook, searcher hook and fly-jib.	

Maximum Reach Below Ground Level		
Four Fall	Two Fall	Single Fall
20.50m	41.00m	82.00m



Total rated load Outriggers at Maximum position							
4.735m/7.695m boom		10.655m boom		13.565m boom		16.475m boom	
Working radius (m)	Total rated load (kg)	Working radius (m)	Total rated load (kg)	Working radius (m)	Total rated load (kg)	Working radius (m)	Total rated load (kg)
< 2.7	3830	3.5	3030	4	2230	5	1130
3.5	3030	4	2580	4.5	1930	5.5	980
4	2580	5	2030	5	1730	6	910
5	2030	6	1680	6	1400	7	760
6	1680	7	1380	7	1180	8	650
7	1380	8	1130	8	1030	9	600
7.25	1330	9	880	9	930	10	550
		10.2	580	10	830	11	490
				11	690	12	440
				12	530	13	380
				13.1	430	14	320
						15	260
						16	210

Total rated load Outriggers at Middle position							
4.735m/7.695m boom		10.655m boom		13.565m boom		16.475m boom	
Working radius (m)	Total rated load (kg)	Working radius (m)	Total rated load (kg)	Working radius (m)	Total rated load (kg)	Working radius (m)	Total rated load (kg)
< 2.7	3830	3.5	3030	4	2230	5	1130
3.5	3030	4	2580	4.5	1830	5.5	980
4	2580	5	1880	5	1630	6	910
5	1880	6	1430	6	1330	7	730
6	1430	7	1130	7	1080	8	630
7	1160	8	880	8	880	9	550
7.25	1120	9	740	9	730	10	480
		10.2	490	10	530	11	430
				11	480	12	380
				12	430	13	330
				13.1	330	14	280
						15	220
						16	180

Total rated load Outriggers at Minimum position							
4.735m/7.695m boom		10.655m boom		13.565m boom		16.475m boom	
Working radius (m)	Total rated load (kg)	Working radius (m)	Total rated load (kg)	Working radius (m)	Total rated load (kg)	Working radius (m)	Total rated load (kg)
< 2.7	3830	3.5	3030	4	2230	5	1130
3.5	3030	4	2580	4.5	1830	5.5	980
4	2580	5	1680	5	1630	6	880
5	1680	6	1180	6	1180	7	730
6	1180	7	880	7	830	8	530
7	930	8	730	8	680	9	450
7.25	780	9	580	9	550	10	420
		10.2	400	10	430	11	370
				11	380	12	330
				12	350	13	280
				13.1	310	14	240
						15	190
						16	150

**Working Range Diagram & Fly Jib total rated load chart**

